

Cleaning:

Only use a dry cloth to clean. Avoid exposing the LED to any liquid or solvent, as this may reduce LED lifetime.

Operating:

There must be a sufficient air gap around the fixture and driver. Keep air and other vents free from obstruction at all times.

Service:

PCB is replaceable on site. Instruction is included here and it is also delivered with spare part PCB. Because LED modules can be changed, a different CCT can always be ordered and installed if requirements change.

Consistency:

Every luminaire has a unique Roblon identification number that registers the initial flux and colour bin. This ensures that a new LED module ordered as a spare part will perform consistently.

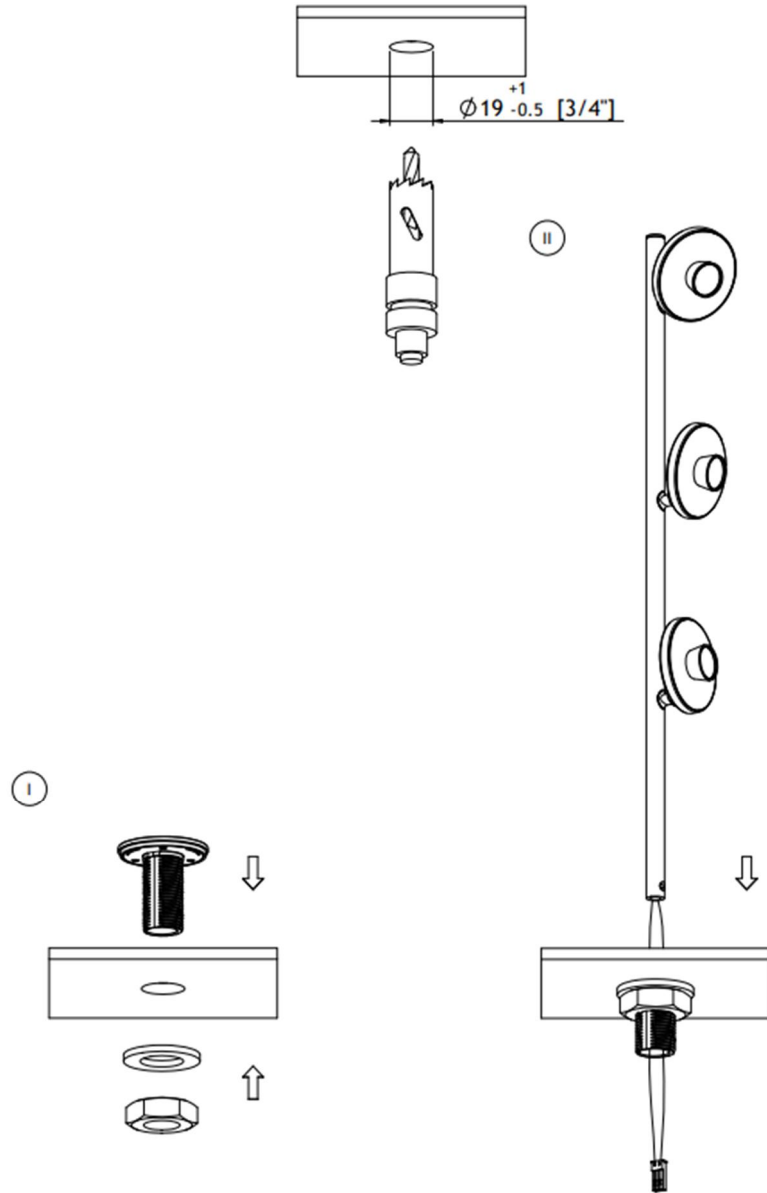


Libra 1, 2 and 3

User manual

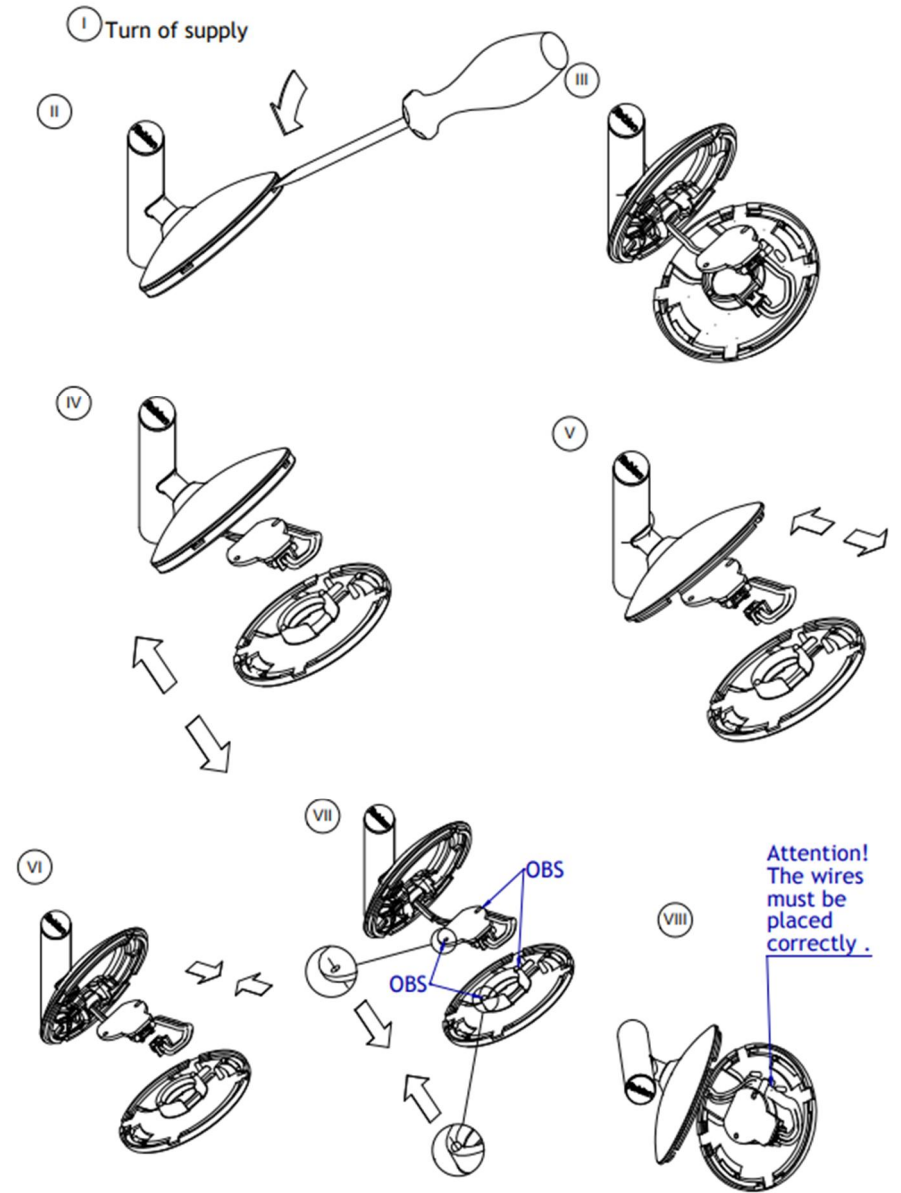
RobLight

Install with nut



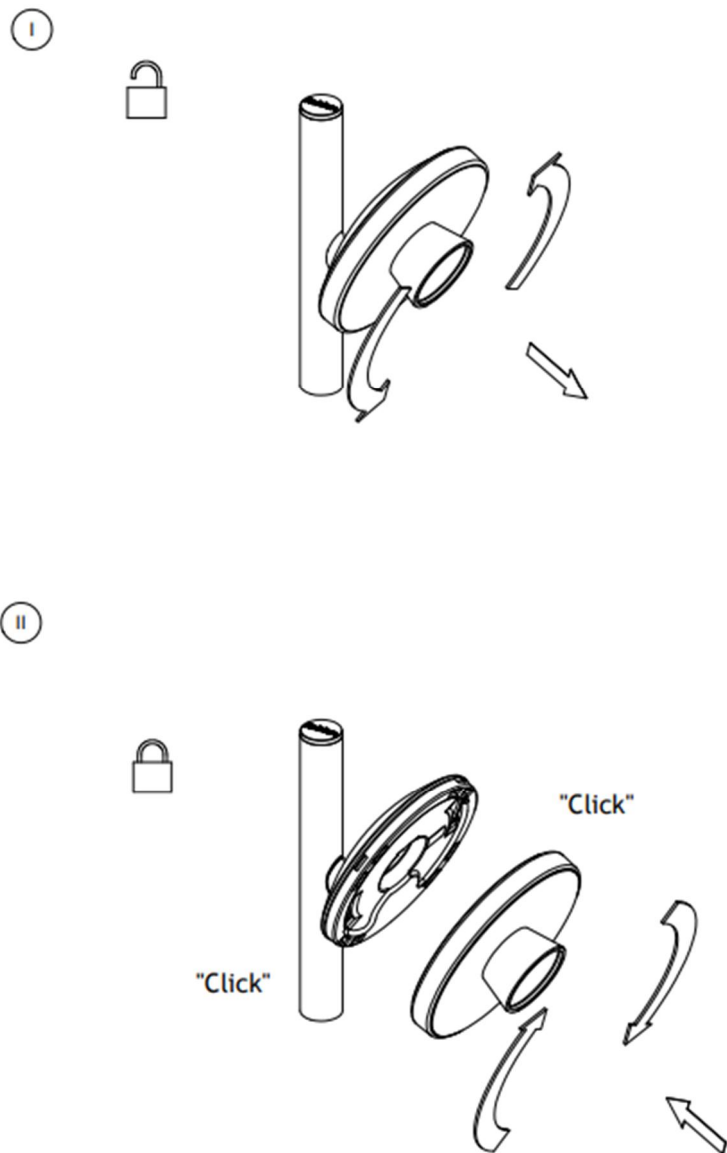
RobLight

Replace PCB



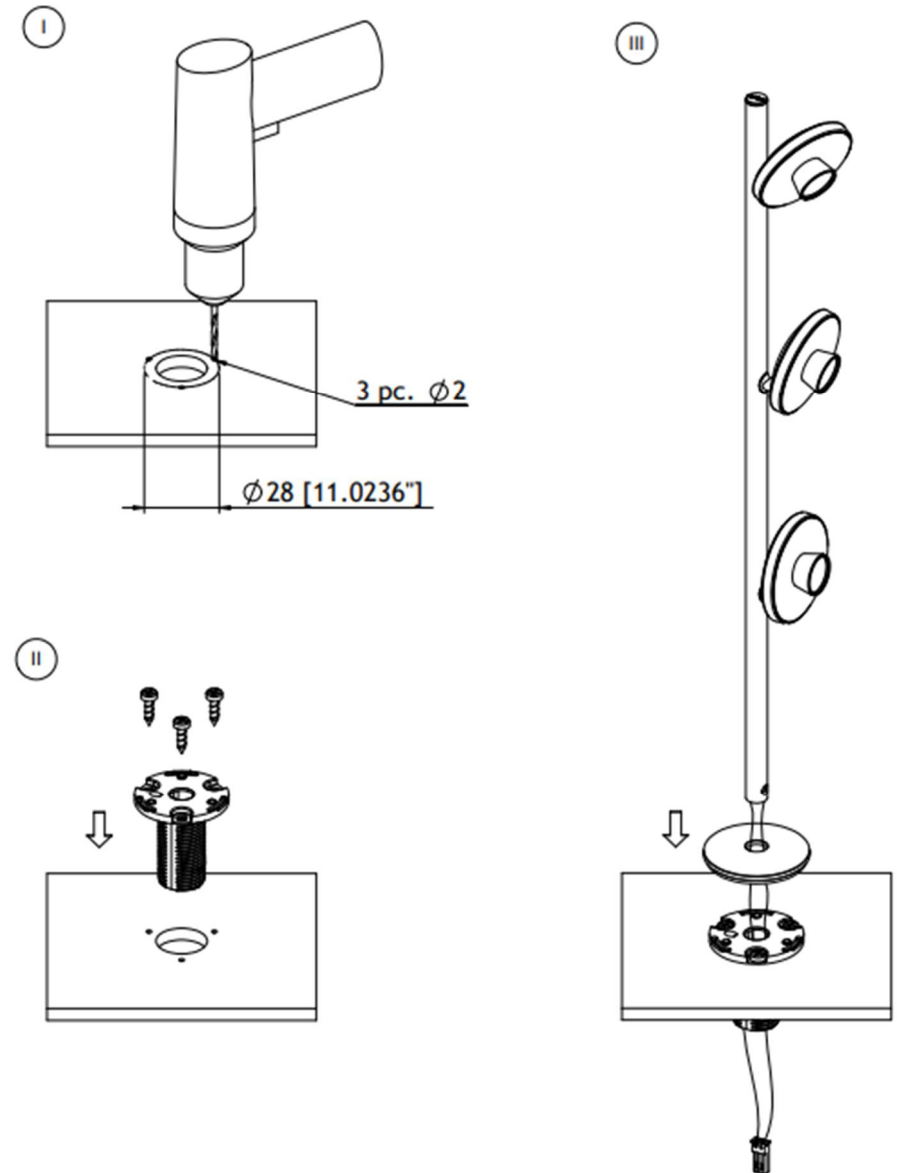
RobLight

Change reflector



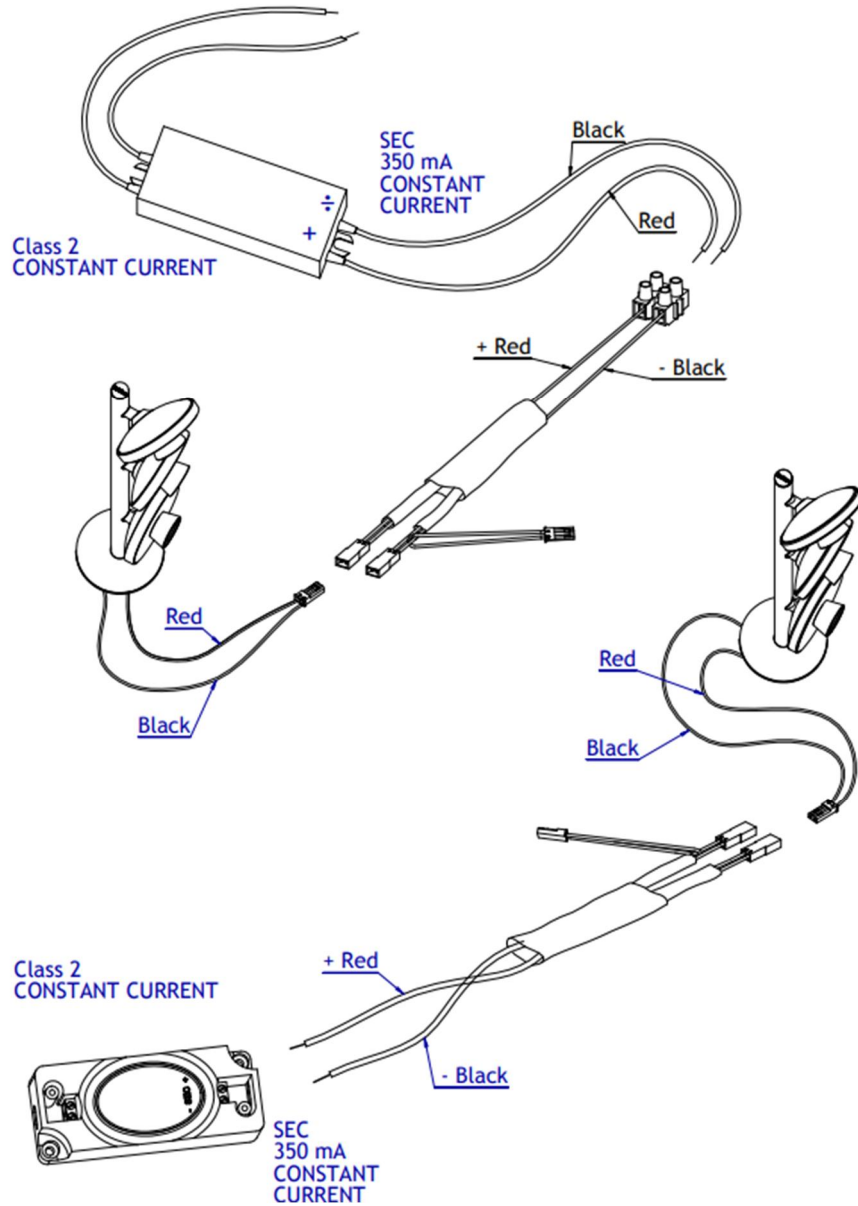
RobLight

Install with screw



RobLight

Connect driver with fixed or screw terminals



RobLight

Adjustment

