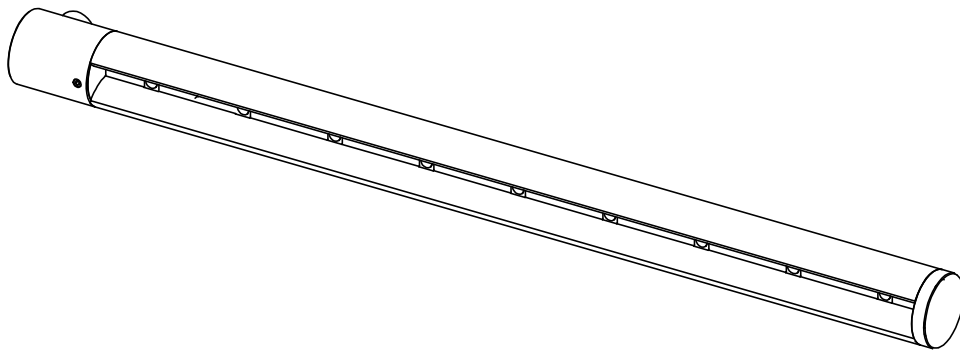


# Surface-mounted XPO-led

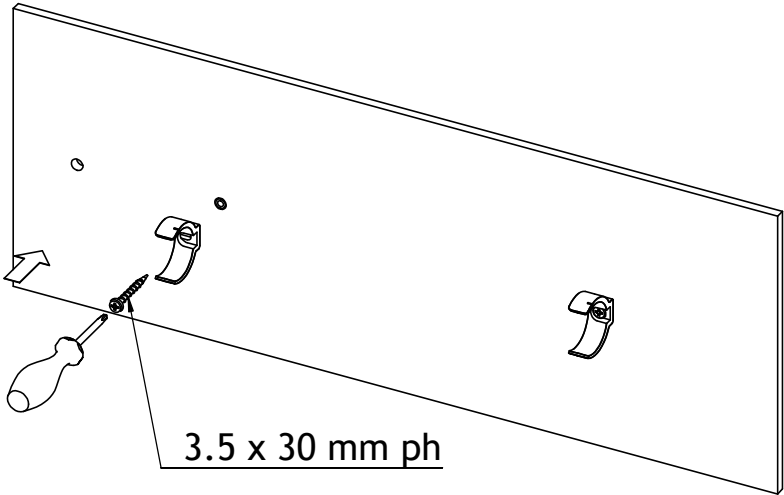
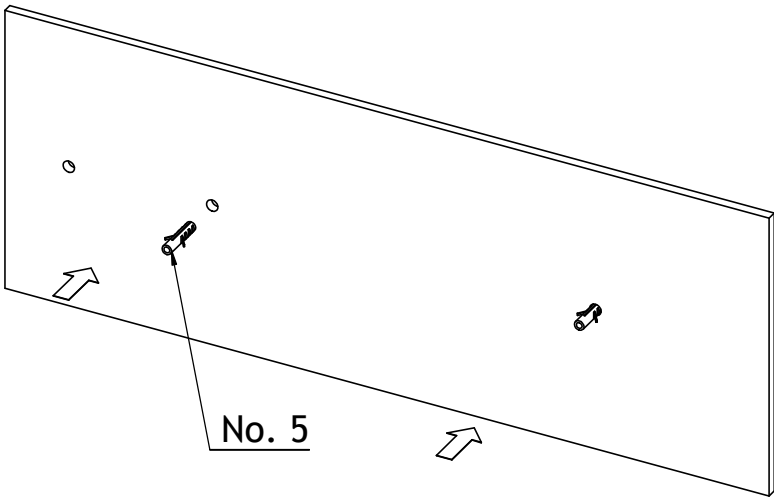
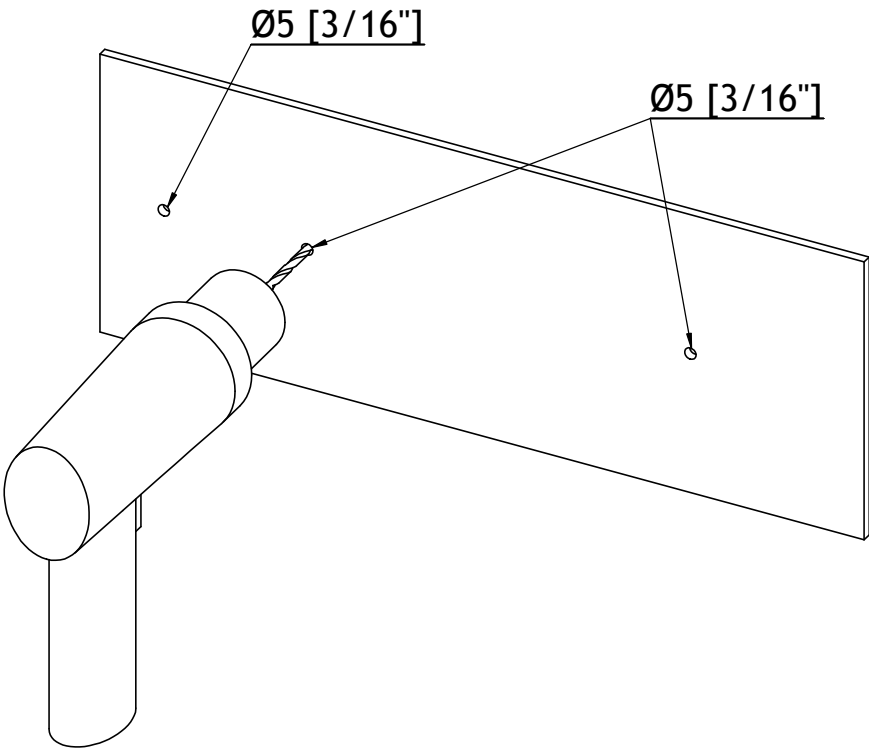
User manual



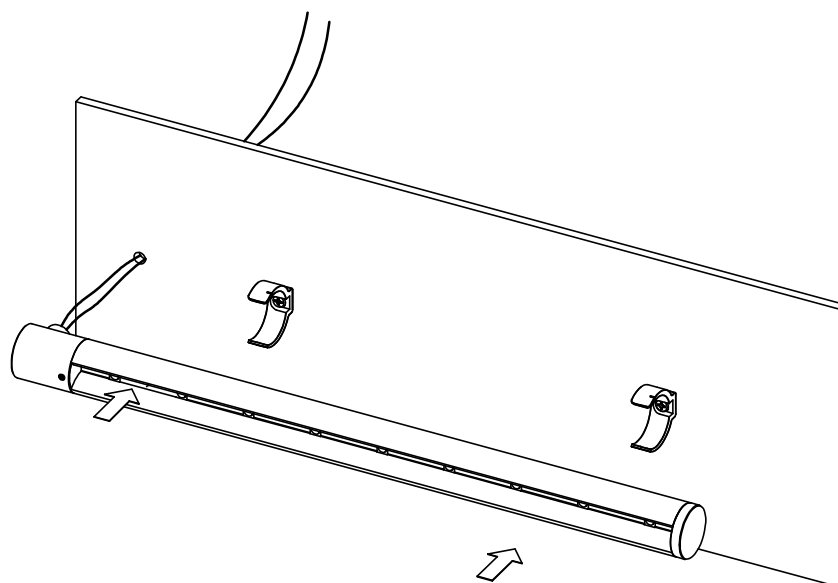
Mounting and installation of the following products.:

Item no.: 1117 0610 Black  
1117 0620 Grey

1. Drill

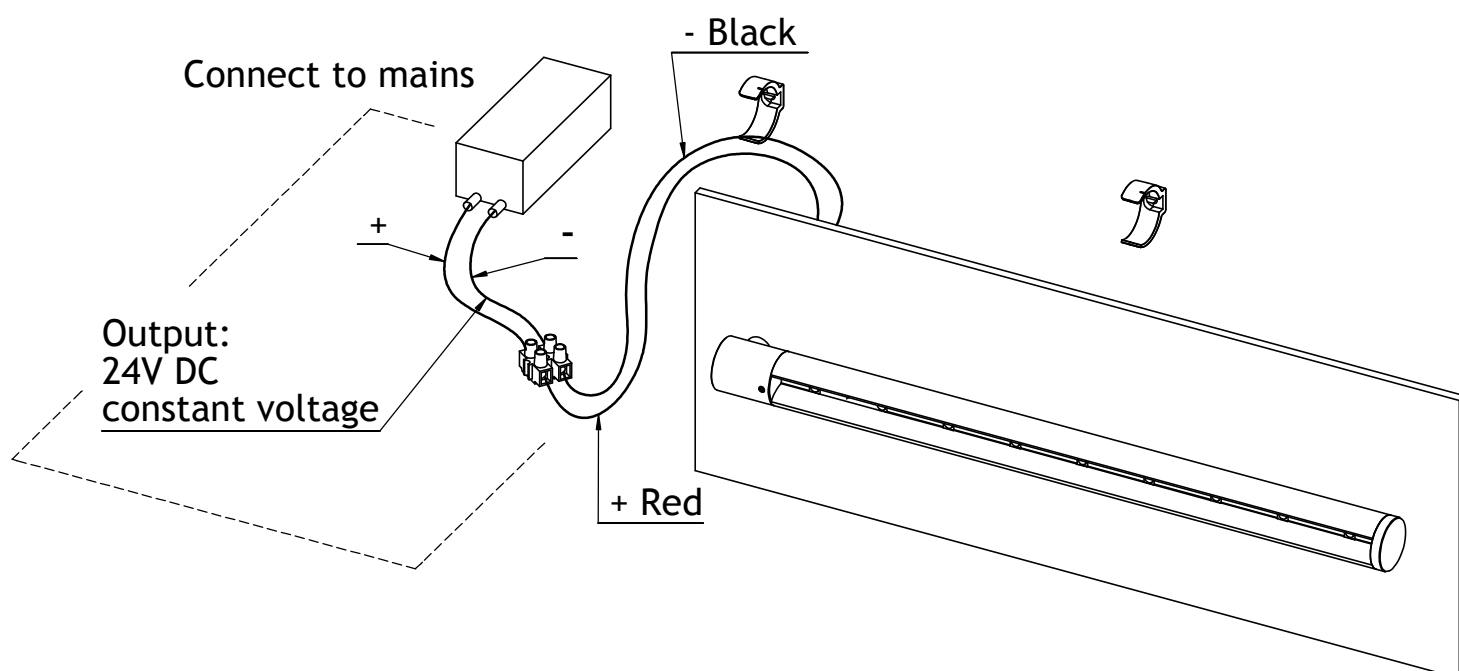


## 2. Mounting.

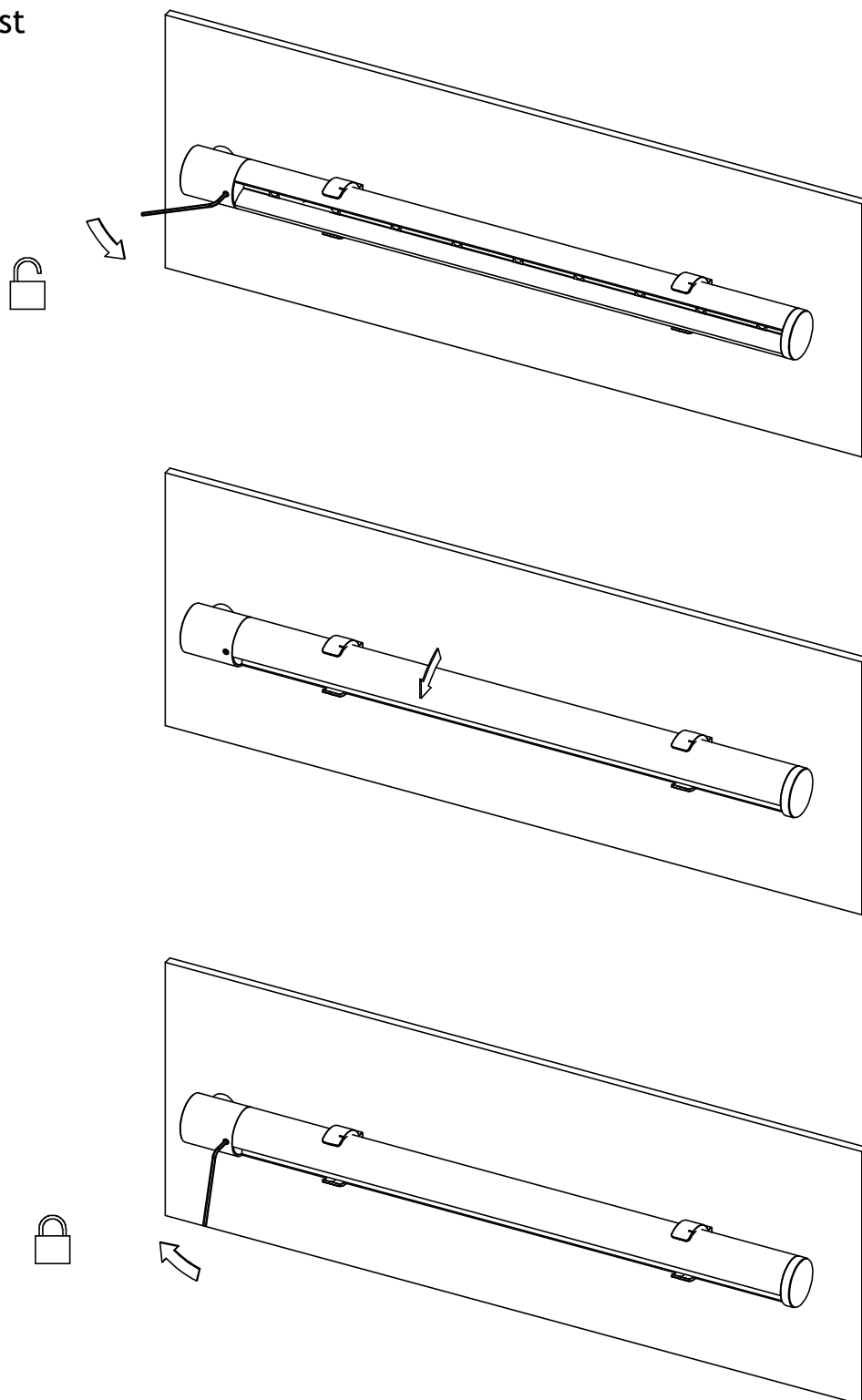


## 3. Connect driver.

Driver connection is indicative.  
Please follow national rules  
for connecting a Class II luminaire.



## 4. Adjust



Roblon accepts no responsibility for possible errors in printed and electronic material. Roblon reserves the right to alter or discontinue products without notice. © 2012, Roblon A/S.

# Roblon

Roblon Lighting  
Nordhavnsvej 1  
9900 Frederikshavn  
Denmark

Tel: +45 9620 3366  
Fax: +45 9620 3396  
info@roblon.com  
www.roblon.com