

# RobLight



---

## XPO 16 horizontal

---

User manual  
item nr: 03131052

# RobLight

---

## Product overview/unboxing

- (1) XPO 16 horizontal
- (2) User manual

---

## Technical data

---

### General

---

Material	Aluminium, plastic and other
Size W	Ø16 x min. 180 mm - max 1500 mm
Side H	Ø16 x min. 40 mm - max 700 mm
Colour	Black (others on req.)
Rotation	±150°
Lens house	11° -30° , 60°
Lens house tilt	±35°
Light point	Max Ø1,5 mm
Mounting hole	Ø22-24 mm
Mounting bughing	Ø20 / M20 / 30 mm
Cleaning	Dry cloth or air

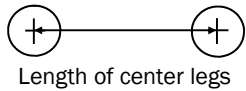
---

## Installation instructions

Follow the installation instructions to ensure

- Safe operation
- Full functionality
- Stated expected lifetime
- Uninterrupted illumination

## Mounting instructions



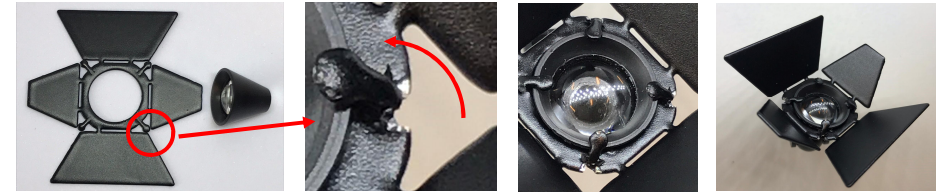
Connect the light generator

## Adjusting the fitting







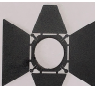
Focus / wide

## Installing accessories



Mounting of barndoor, bend down bracket holders

## Accessories / Spare part

	Part name	Description	Item no.
	XPO 16 Optical Head Medium, Black		0610 0350
	XPO 16 Optical Head Wide, Black		0610 0352
	XPO Cover Flange 2 Parts, Black		0610 0504
	Mounting bush		0610 0501
	Barndoor, flat		4300 3018